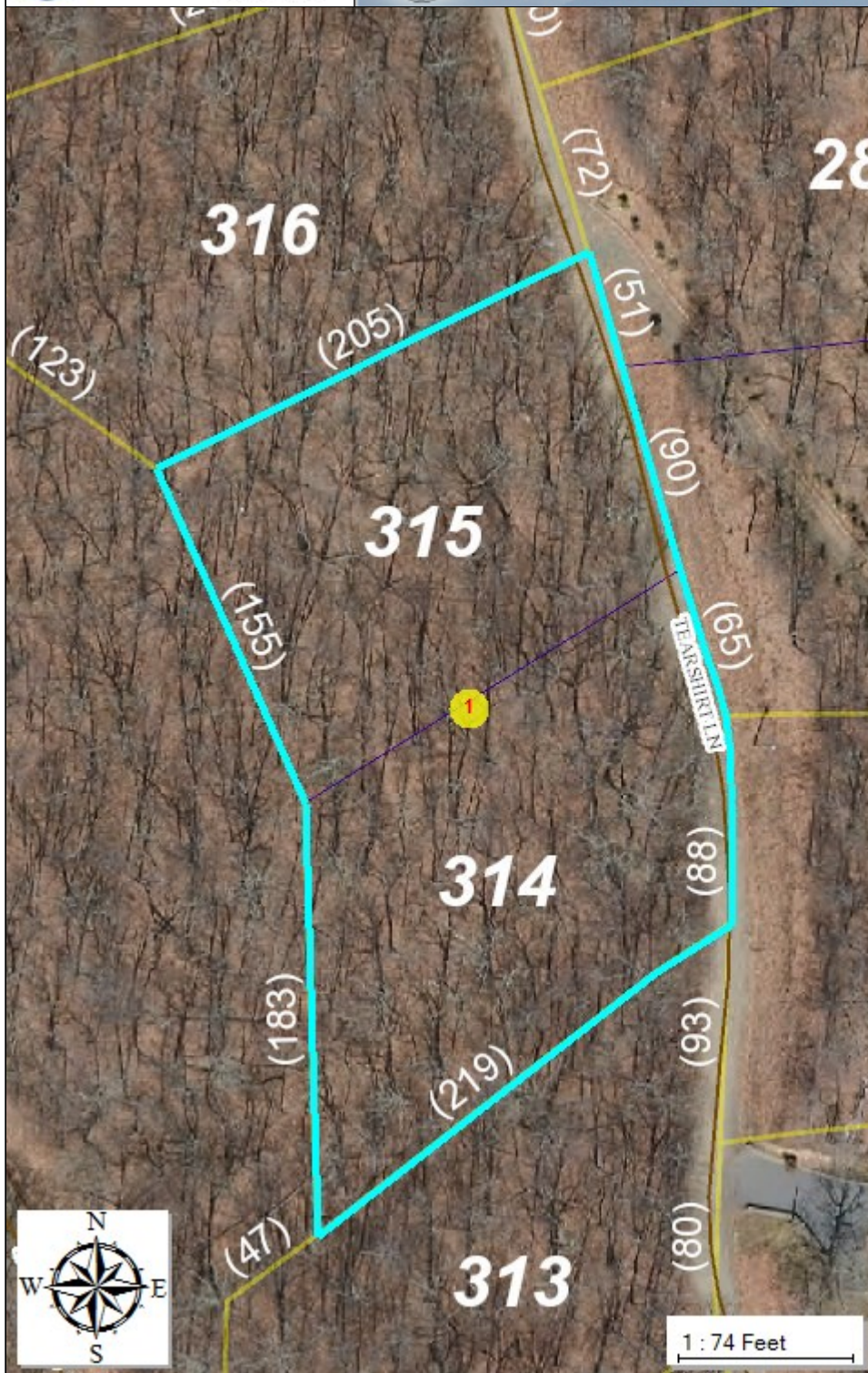




Yancey County
North Carolina

yancey
Printed March 27, 2018
See Below for Disclaimer



- Land Parcels
- County Boundary
- < all other values >
- YANCEY
- Town of Burnsville
- Symbology
- Road Centerlines
- < all other values >
- DIRT/GR*
- PAVED

The County of Yancey acquires, develops, maintains and uses GIS data in support of its internal business functions and the public services it provides. The GIS data which Yancey County distributes and to which it provides access may not be suitable for other purposes or uses. It is the requestor's responsibility to verify any information derived from the GIS data before making any decisions or taking any actions based on the information. Yancey County shall not be held liable for any errors in the GIS data. This includes errors of omission, commission, errors concerning the content of the data, and relative and positional accuracy of the data. Source information used for these data may have been collected at different scales, times or definitions, resulting in inconsistencies among features represented together on this map. Primary sources from which these data were compiled must be consulted for verification of information contained in the data. Yancey County will not re-distribute data developed from other organizations. Parcel data was prepared for the inventory of real property found within this jurisdiction, and is compiled from recorded deeds, plats, and other public records and data. Users of the data are hereby notified that the aforementioned public primary information sources should be consulted for verification of the information. Yancey County assumes no legal responsibility for this information. Data are presented using the North Carolina State Coordinate System 1983 North American Datum. Horizontal measurement units are in feet. Yancey County does not guarantee that the data and map services will be available to users without interruption or error. Furthermore, the County of Yancey may modify or remove map services and access methods at will.